

# ENDEAVOUR

---

Follow your instinct



# ENDEAVOUR

The open road. A blank sheet. Destination unknown. The new Bailey Endeavour is ready and waiting – and the perfect partner as you write your own adventure.

Made for living life in the moment and out on the road, Endeavour is the newest member of the Bailey family.

Compact by design, immense in performance, and adventurous by nature, the first ever panel van conversion from Bailey is primed and ready. It's designed and engineered to be agile so you can simply pack up and take off. At the same time, it's smart and spacious for every stay along the way. So, no matter what's in front of you, Endeavour has your back through every twist and turn.

Using Ford's high-performance engineering as its foundation, Endeavour is packed with more than 75 years of Bailey knowledge and know-how – and all the little details and big thinking that make us The Nation's Favourite.

It's time to follow your instinct, go off-script and write your own adventure. It's time for Endeavour.



## Ready for everything

During its design and development, we pushed Endeavour to unparalleled extremes. So you can do the same.

From the searing heat of the Sahara Desert to the Arctic temperatures of a cold chamber, Endeavour has certainly been put through its paces. Now, it's ready to take anything and everywhere in its stride.

With its Truma D4E Diesel Combi heating and hot water system, Endeavour brings you all-season, all-weather comfort. The flexibility of the Truma 100-watt solar panel means going off-script can take you off-grid, too. And with versatility and durability built in from the ground up, Endeavour can take on the toughest terrain – so no adventure is off-limits.



## Extreme Endeavour

Hitting the road from our Bristol home, this 2,735-mile trip to the wilds of Saharan North Africa took Endeavour to the next level.

Endeavour took on everything the Sahara's dramatic and demanding landscape had in store.

As the world's largest desert, the Sahara is far more than 9.2 million km<sup>2</sup> of sand. Here, salt flats and 450-metre sand dunes join mountains and rocky plateaus. Temperatures range from highs that can reach 58°C right down to -6°C at night, making it one of the harshest climates on the planet.

For Endeavour, it's just another chapter in the adventure.



Scan to see more.

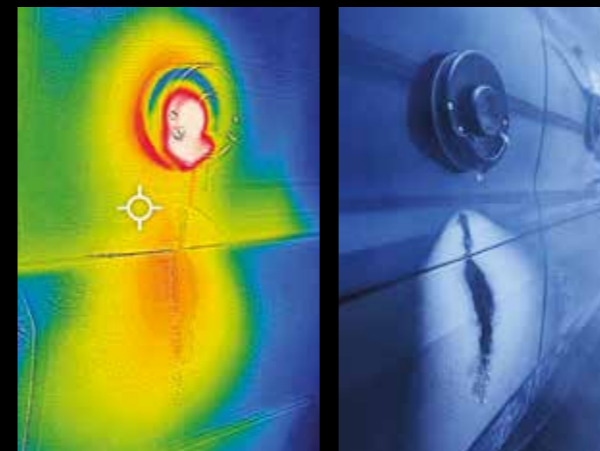


## Above, beyond -15 below

From one extreme to another. Facing the cold climate-controlled chamber head-on, Endeavour was up against temperatures of -15°C.

Cold chamber testing quickly separates the good from the great. Plunging Endeavour into temperatures that hit -15°C outside whilst maintaining a +20°C inside shows that its construction and materials are more than up to it. Endeavour is still capable of doing so much more than survive.

Testing like this also further cements the character that sets Endeavour apart from the rest: resilient, ready, and above all, leaving good for dust.



Scan to find out more.

## Built for beyond

Flexible, durable and endlessly adaptable, Endeavour is packed with heavyweight features that make light work of whatever's on the horizon.

With a high-performance 2.0 litre, 155 bhp Ford engine under the bonnet, complete with 6-speed automatic transmission, Endeavour is powered to perfection. Inside, we go the extra mile on every square inch, so from heating to storage to cooking up a storm you couldn't be better equipped to be way ahead – no matter how the adventure unfolds.

### Favourite Facts about Endeavour

- 'Chrome Blue' Ford Transit with high performance 2.0 litre 155 bhp engine complete with 6-speed automatic transmission
- Fully specified cab with 12" touchscreen infotainment system, air conditioning and cruise control all as standard
- Thule 3.5m wind-out awning to enhance the enjoyment of the great outdoors
- Flexible Truma 100-watt solar panel for off-grid holidays
- Four-season all-weather sustainability with Truma Diesel Combi D4E blown air heating and hot water system
- Fully equipped kitchen with Thetford 90 litre refrigerator, a 3-ring gas hob and a combination oven and grill
- Cleverly designed washrooms, featuring a space saving revolving tambour partition screen, contain a Thetford cassette toilet and an Ecocamel onboard shower.

Status 570 television aerial

3.5m Thule wind-out awning

Panoramic over-cab sunroof

Daytime running lights and front fog lamps

16" matt black alloy wheels and underslung steel spare wheel

Pre-wired for optional Avtex mobile WiFi system (available via your supplying Retailer)

100 watt Truma flexible solar panel

Rear-view reversing camera and reversing sensors

Exterior sliding door

Electric Thule side entrance step



Find out more.

[baileyofbristol.co.uk/Endeavour](http://baileyofbristol.co.uk/Endeavour)

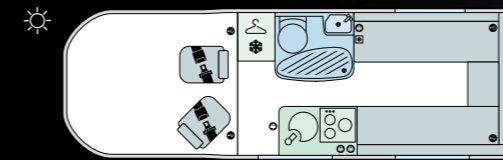


**B62** **2**

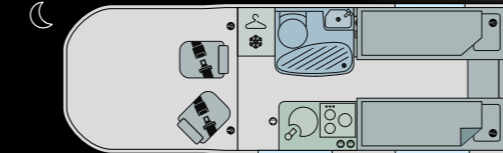
Designated Travelling Seats	2
Berths	2
Overall Body Length	5.980m/19'7"
Overall Body Width	2.489m/8'2"
Overall Height	2.824m/9'3"
Internal Headroom	1.960m/6'5"
MTPLM	3500kg
MRO	2873kg
Total User Payload	627kg

**Bed Sizes**

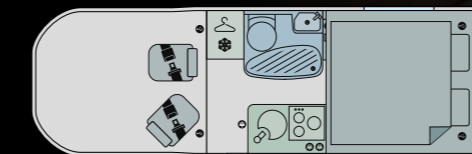
Rear double	1.86m x 1.90m/6'1" x 6'3"
Rear N/S single	1.90m x 0.65m/6'3" x 2'2"
Rear O/S single	1.90m x 0.65m/6'3" x 2'2"



Single beds layout



Double bed layout



**Vehicle weights:** the MRO figure is the weight of the unladen motorhome plus an allowance for the driver, 90% of the fuel tank capacity and 'essential habitation equipment'. The MRO is declared with the fresh water tank empty (it is not recommended that you travel with water in the fresh water tank but if you chose to do so then your available payload will reduce accordingly). A tolerance of +/- 5% has also been allowed for in the calculation in the MRO figures. Please refer to [baileyofbristol.co.uk](http://baileyofbristol.co.uk) for more information.





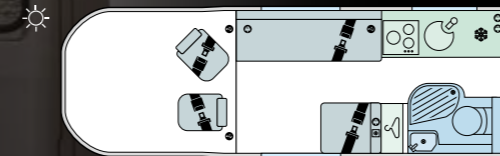
**B64**

4

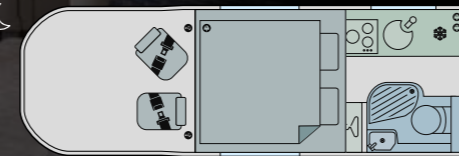
Designated Travelling Seats	4
Berths	4
Overall Body Length	5.980m/19'7"
Overall Body Width	2.489m/8'2"
Overall Height*	3.00m/9'10"
Internal Headroom	1.960m/6'5"
MTPLM	3500kg
MRO	3055kg*
Total User Payload	445kg*

**Bed Sizes**

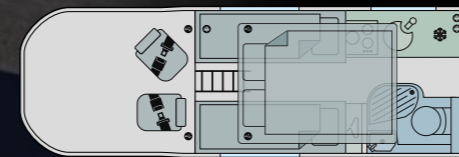
Front double	1.88m x 1.77m/6'2" x 5'7"
Front N/S single	1.88m x 0.62m/6'2" x 2'
Front O/S single	1.88m x 0.62m/6'2" x 2'
Pop top double**	2.02m x 1.27m/6'8" x 4'2"



Double bed layout



Pop top double with single beds below



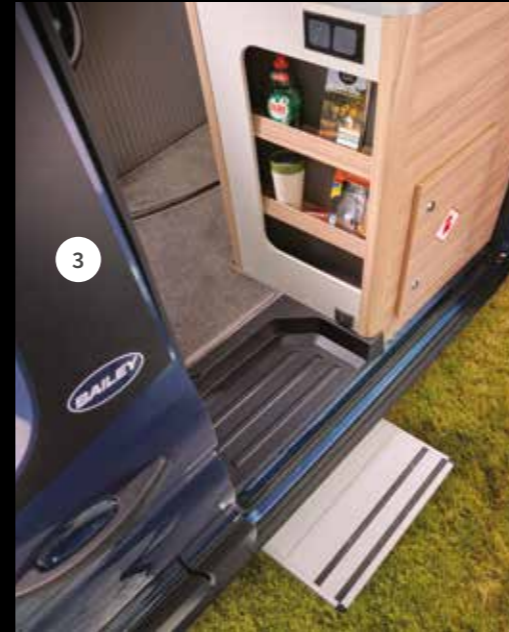
**Vehicle weights:** the MRO figure is the weight of the unladen motorhome plus an allowance for the driver, 90% of the fuel tank capacity and 'essential habitation equipment'. The MRO is declared with the fresh water tank empty (it is not recommended that you travel with water in the fresh water tank but if you chose to do so then your available payload will reduce accordingly). A tolerance of +/- 5% has also been allowed for in the calculation in the MRO figures. \*Estimates. \*\*Pop top double bed has a maximum load capacity of 180kg. Access to the pop top roof is not possible if double bed is made up below. Please refer to [baileyofofbristol.co.uk](http://baileyofofbristol.co.uk) for more information.



# ENDEAVOUR



- 1 Fully specified cab with 12" touchscreen infotainment system, air conditioning and cruise control
- 2 Drop down kitchen worktop extension
- 3 Electric Thule side entrance step
- 4 Fully adjustable driver and passenger upholstered Captain's chair
- 5 Onboard shower with riser bar



- 6 Four-season all-weather sustainability with Truma Diesel Combi D4E blown air heating and hot water system
- 7 Thetford 90 litre refrigerator
- 8 3-ring gas hob and combination oven and grill
- 9 Domestic style sofa seating featuring premium quality fabrics, sprung base cushions and foam back rests
- 10 Cleverly designed washrooms featuring space saving revolving tambour partition screen
- 11 Thule side mounted 3.5m wind out awning







**Pack adventure in. Leave nothing out.**

The world awaits – and the new Bailey Endeavour is ready. Our first ever panel van conversion packs in everything for on-the-fly adventure, with an interior that flexes and adapts to your every need. Escape has never come easier. Or faster. Ready when you are.



## Where to buy your Bailey

New Bailey motorhomes are available for sale via our Approved Retailer Network. They are also the best place to find pre-owned Bailey models\*, along with our independent Approved Service Centres, can look after any servicing or warranty work on your vehicle.\*\*

Find your nearest agent either by scanning the QR code below or visiting the Find a Retailer page on [www.baileyofbristol.co.uk](http://www.baileyofbristol.co.uk)



\*Subject to availability.  
\*\*Terms and conditions apply. Please refer to [baileyofbristol.co.uk](http://baileyofbristol.co.uk) for more details.



No wrong turns

## PRIMA

LEISURE ACCESSORIES

Prima Leisure is the home of Bailey caravan and motorhome parts and accessories. With a choice of up to 30,000 products available to purchase through a dedicated website, you can order items on-line to be delivered direct to your door. Scan below for more information on how to kit out your Endeavour.



## Bailey Owners Club

Want to join a friendly community of Bailey lovers? Endeavour owners are welcome to join the Bailey owners club. Scan below to find out how to become part of the family.



ENDEAVOUR



The Nation's Favourite

Join our community



[baileyofbristol.co.uk](http://baileyofbristol.co.uk)

This brochure does not constitute an offer by Bailey Caravans Ltd (Bailey). Bailey reserves the right to alter specifications and prices as market and supply conditions demand. Your Bailey Retailer will confirm all specification details prior to you making your purchasing decision. E. & O. E. Bailey Retailers sell our products of their own choice and not as agents of Bailey. Accordingly they have no authority to bind Bailey or to make any representation or undertaking whatsoever on behalf of Bailey. All household items illustrated in this brochure are used to enhance photography and are for display purposes only. They are not supplied with your leisure vehicle. Photographic colour reproduction is subject to the limitations of the production process.  
Printed September 2023.

Designed and produced by: saintnicks

Photography: Alan Bond.

Photography locations:

Elan Valley, Wyese Camping and Caravanning Club Site, Rhayader, Powys, Wales LD6 5LB  
Dades Gorge, Morocco  
M'hamid, Morocco