

love
escape



SWIFT
CREATING SMILES FOR LIFE



love life

LOVE SWIFT

UNDER OUR OWN BLUE SKY

Take me to a place that I call Here,
Hold me in a time that I call This
The air is clean, the light is clear
And now an outdoor kind of bliss
Draws me to a spot I really love;
The door wide open, the kettle on,
A family that fits me like a glove.

A moment's pause for those who've gone
Who still remain in the mind and heart.

And now, under our very own blue sky
The rest of our lives can slowly start
And our spirits can begin to fly
With memories of where we've been,
Those mornings we have yet to know
Those brand new vistas all unseen.
Love life, I say. And now, let's go!

©Ian McMillan 2021

love life
LOVE SWIFT

Contents

PG05 LOVE ESCAPE - A NEW LEVEL OF LUXURY

PG07 HIGHLIGHTS

PG12 EXTERIOR STYLE

PG14 SMART CONSTRUCTION

PG16 FEATURES

PG18 FABRIC OPTIONS

PG20 TECHNICAL SPECIFICATION

PG24 WHERE TO BUY YOUR ESCAPE





A new level
of luxury



ESCAPE

FROM
£64,895^{OTR*}

Rediscover Escape, redefined and completely restyled for a more contemporary look. Presenting premium finishes, lighter textiles, and streamlined new furniture with high-gloss cream lockers and textured metal inlay. Escape is an exquisite motorhome range designed for those seeking refinement and utility from boutique style washrooms, to a spacious garage area and innovative features.

*On the road (OTR) price includes a recommended cost of £1,395.00 to cover delivery to dealer in Great Britain, a set of number plates (inc. VAT), 12 months road fund licence and first registration fee. See model for price details.

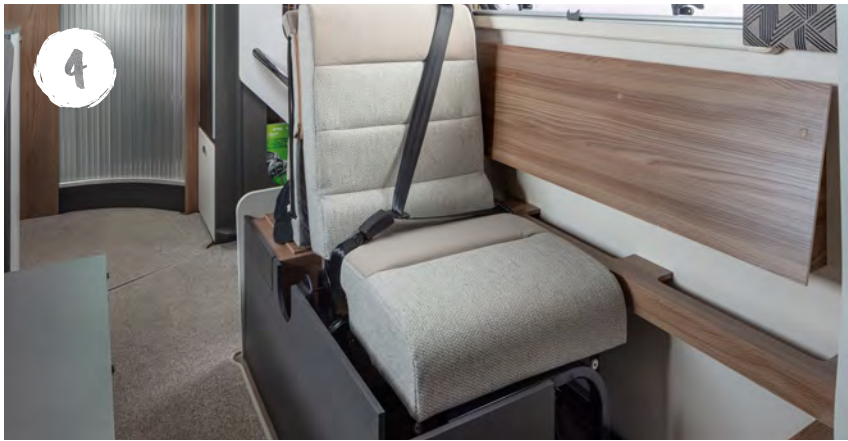


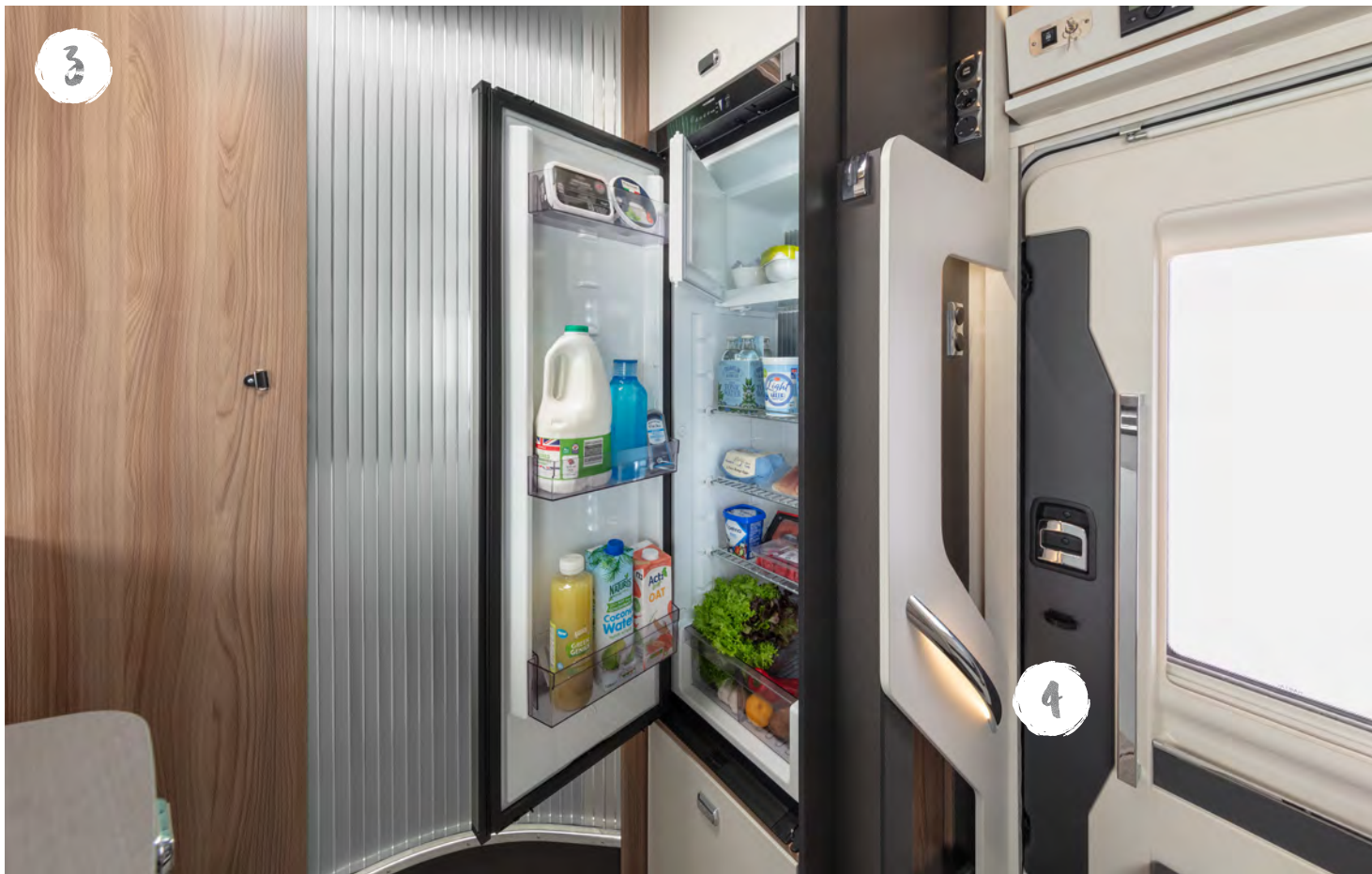
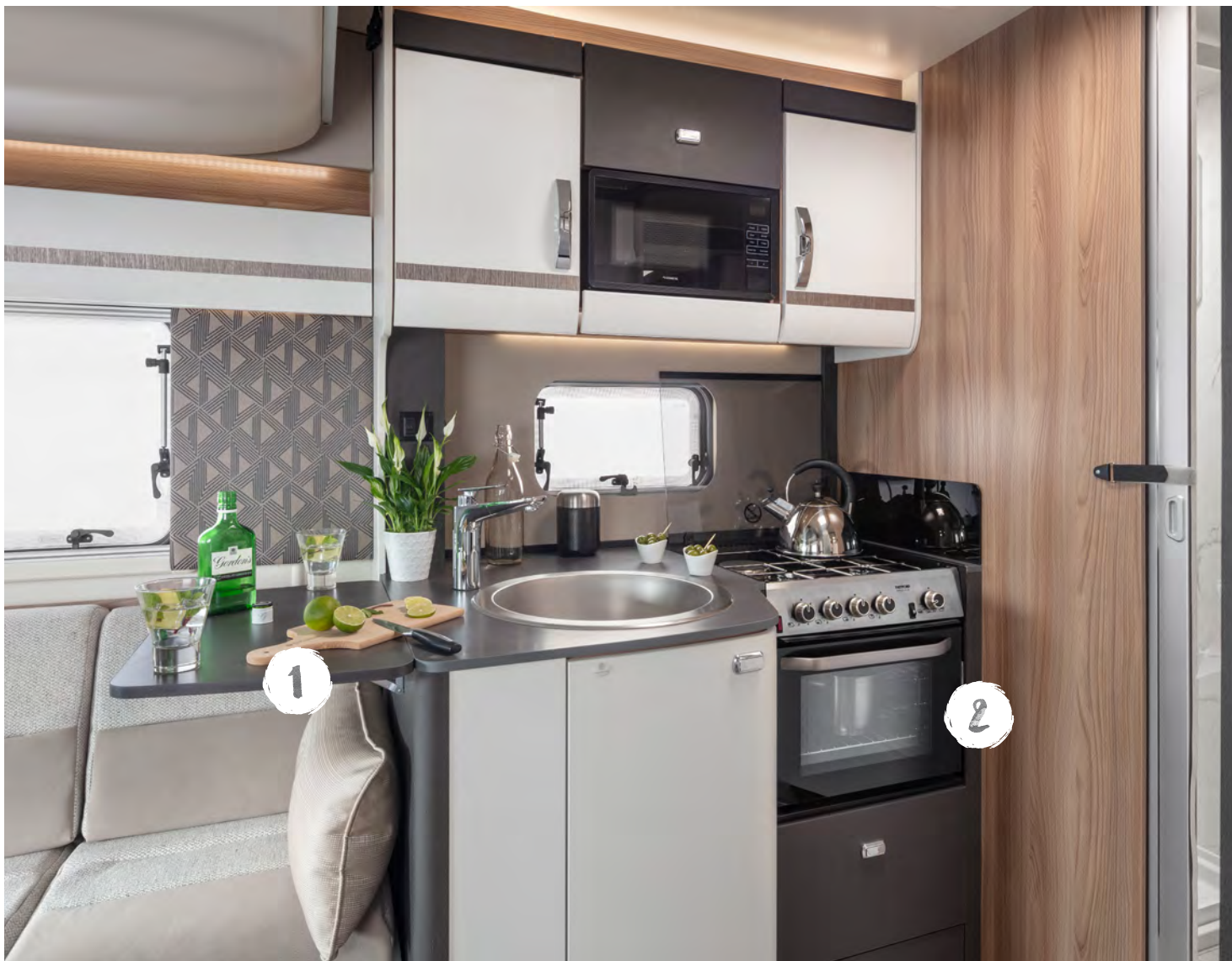
Highlights

Escape's sleek profile is enhanced with a new Fiat cab in metallic Iron Grey and complementary graphics. Step in through the wide entrance door with window, and marvel at the revolutionised living space with head room to spare, sit back and and relax into super comfortable domestic-style seating while enjoying crystal clear DAB sound incorporated within the redesigned dashboard.

- 1** **NEW** Calipso soft furnishing scheme, contoured for comfort, easy to clean and thoroughly tested for stain resistance.
- 2** **NEW** cream gloss, soft-close upper locker doors feature **NEW** complementary inlays and **NEW** complementary Toro Tela and Grau furniture.
- 3** Ergonomically contoured bedding and sumptuous fabrics for improved seating and sleeping comfort.
- 4** **NEW** fold-down Aguti travelling seats incorporating ISOfix.
- 5** **NEW** wider, height adjustable electric drop-down bed over front lounge with exclusive Duvalay Duvalite Apollo Luxe mattress*.
- 6** Adjustable driver and passenger captain chairs with swivel base, two armrests, and integrated headrest.

*Model specific





- 1

 Redesigned kitchen with **NEW** Slate Weft laminate kitchen worktop with textured finish and **NEW** illuminated Beige Weft laminate kitchen splashback.
- 2

NEW upgraded Thetford Triplex combination oven and grill, plus a 3 burner gas hob with **NEW** electric hotplate, and **NEW** Dometic built-in flatbed microwave.
- 3

 Dometic (Series 10) 133 litre, tall slimline, dual hinged, fridge.
- 4

 Ultra-low energy lighting throughout, including LED downlights and illuminated grab handle.
- 5

 Flush fitting, double glazed, tinted acrylic windows with night latch ventilation, cassette blinds and flyscreens.
- 6

 Fascia controls including user friendly 12V panel (battery selection, lighting and water pump), Truma heating and electronic drain valve.



1

NEW gloss white combined vanity bowl and top with upper and lower cupboard storage, mirror and vector chrome effect mixer tap.

2

NEW Crema Bianca marble effect wallboard and concrete effect sidewall GRP in shower with Tournai Stone floor vinyl on raised floor in vanity area*.

3

NEW washroom design with a level floor, vanity unit, sink, toilet and dedicated shower with **NEW** quadrant shower lighting.

4

NEW dashboard design with 7" touchscreen HD colour display incorporating **NEW** DAB radio with Apple Carplay™ /Android Auto™, USB and Bluetooth.

5

Reversing camera with 7" LCD screen rear view mirror, cruise control and steering wheel controls for added convenience.

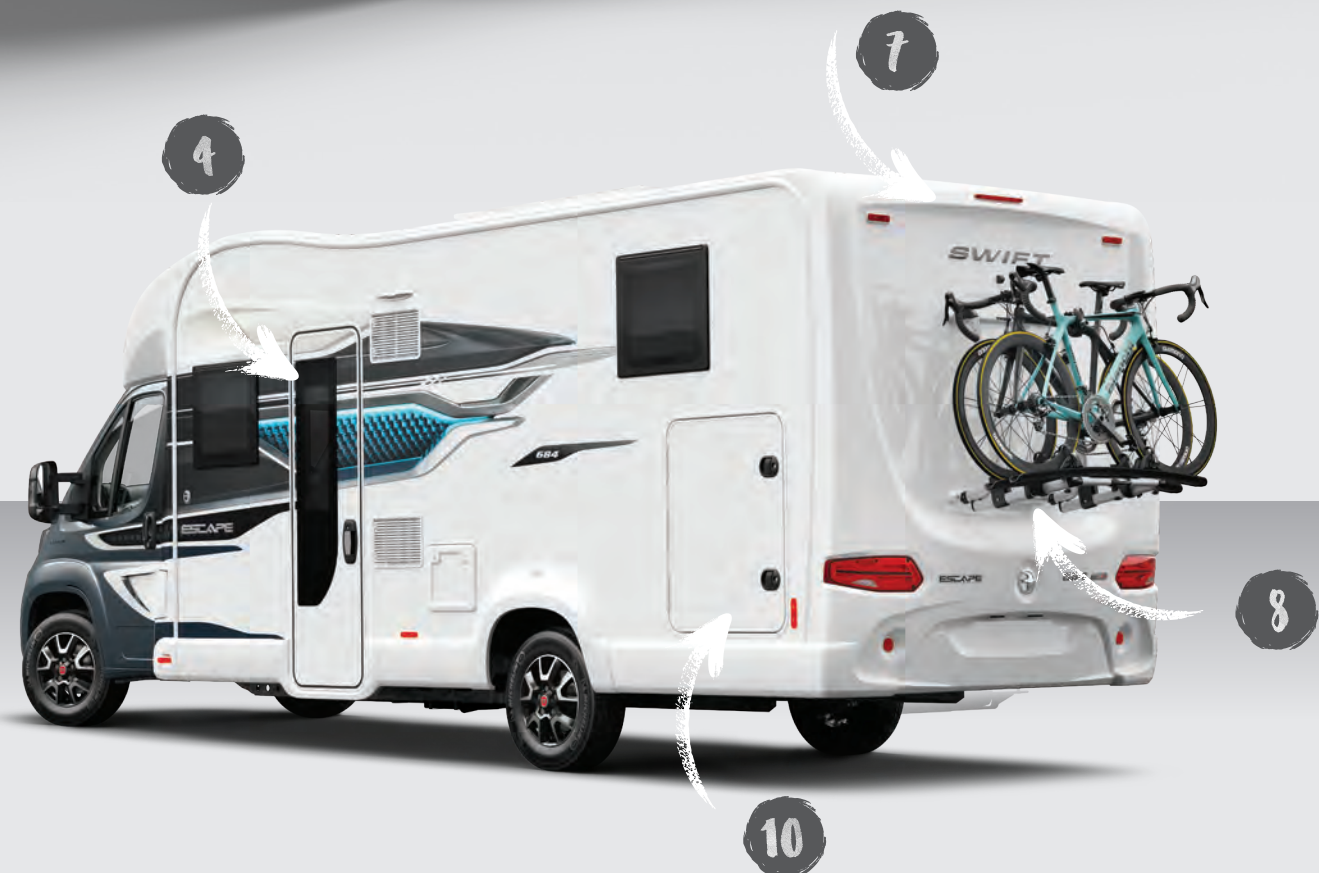
6

Panoramic opening sunroof to flood the interior with natural light.

*Dependent on model



Love
Style



Escape



- 1** NEW Fiat Series 8 chassis cab in NEW Iron Grey Metallic, with body coloured bumper and silver grille trim.
- 2** Streamlined aerodynamic profile with NEW stylish exterior graphics scheme coordinated with cab.
- 3** NEW Euro 6D Final 140bhp, 2.2 litre engine with NEW 6-speed manual gearbox and Eco and ESC Pack including anti-slip regulation (ASR), roll over mitigation (ROM) and hill holder.
- 4** NEW wider habitation door (600mm) with window, flyscreen, bin, umbrella stand and central locking.
- 5** NEW 100W solar panel.
- 6** Truma 'Crash Sensor Mono' regulator for en-route use of heating and water heating.
- 7** Ample LED exterior lighting, including high-level brake light, for better visibility.
- 8** Bike rack fixing rails fitted to the rear, so you're ready for an adventure.
- 9** Underfloor mounted 90 litre fresh water and 68 litre waste water tanks with level sensors.
- 10** NEW rear garage with lighting, heating, sockets and hanging provision, with access doors on both sides and exterior access locker door in to bed box*.

*Model specific

SMART CONSTRUCTION



SMART is the basis of our intelligent construction system used across our entire coachbuilt motorhome range. Strong, Modern, Aerodynamic, Resilient and Tested, you can be assured your Swift motorhome is a high quality, engineered product.



STRONG

The Strong timberless body frame uses 'PURE', a tough, hard polyurethane based product that is totally impervious to water and has been proven through use.



MODERN

The SMART construction system uses Modern materials and has been developed to ensure the exterior profiles maintain the Modern desirable looks our motorhomes are renowned for.



AERODYNAMIC

We continue to lead the way in Aerodynamics using Computational Fluid Dynamics to help shape the bodyshell for better fuel consumption.



RESILIENT

All fixings are made into the 'PURE' material to a pre-defined depth. 'PURE' is totally impervious to water and has no veins. This means there is no passage for water from the outer skin, making the motorhome highly Resilient to moisture.



TESTED

Extensive safety and durability Testing at the Millbrook track, and cold chamber Testing down to minus 15°C and beyond, puts prototypes through conditions most products will never have to experience in a lifetime; all part of the Swift ethos to deliver the best products.



HAIL RESISTANT GRP ROOF

Woven GRP outer surface provides greater durability from the elements.



GRP SIDEWALLS

Balanced panel side walls with GRP outer and inner skins. GRP is more impact resistant than aluminium and can be easily repaired, ensuring long lasting good looks and helping protect your investment for the future.



'SMART' GRP sidewall during the production process.



FLOOR CONSTRUCTION

'Sandwich' floor construction with ply upper, high rigidity Styrofoam core and GRP outer skin to provide greater durability from the elements.

EXTERIOR & CONSTRUCTION

- European Whole Vehicle Type Approval ensures compliance with strict weight, dimensions and safety regulations
- **NEW** Fiat Series 8 chassis cab in **NEW** Iron Grey Metallic, with body coloured bumper and silver grille trim
- AL-KO low line chassis conversion with wide rear track
- EN 1646-1 Grade 3 classification for heating and thermal insulation, for sub-zero ambient temperatures, confirmed by cold chamber testing
- **NEW** Euro 6D Final 140bhp, 2.2 litre engine with **NEW** 6-speed manual gearbox and ESC and Eco Pack
 - ESC includes: anti-slip regulation (ASR), roll over mitigation (ROM) and hill holder
 - ECO Pack: stop/start system, smart alternator and more efficient energy saving fuel pump
- 60L fuel tank and AdBlue based after treatment system with 19L tank (75L fuel tank on 674)
- SMART construction with full GRP bodyshell:
 - Strong, moisture proof 'PURE' Polyurethane timberless framed body shell with HD polystyrene insulation core
 - Balanced panel 31mm sandwich side walls with GRP outer and inner skin
 - 44mm 'Sandwich' floor construction with GRP outer skin, ply upper and high rigidity Styrofoam core
 - 31mm 'sandwich' construction hail resistant exterior GRP roof, fully bonded for extra strength and flatness, and GRP inner skin
 - Full height GRP rear panel
- GRP front low line pod with opening panoramic sunroof
- White extruded skirts link with full GRP rear panel
- Distinctive streamlined exterior front profile
- **NEW** stylish exterior graphics scheme coordinated with cab
- Stylish 16" alloy wheels
- Fix & Go puncture repair kit
- Daytime running lights
- Low energy LED lighting
 - Exclusive styled front marker lights
 - Side marker lights
 - Exclusive rear light clusters
 - High-level brake light
 - Exterior awning light
- **NEW** 100W solar panel
- **NEW** wide habitation door (600mm) with window, flyscreen, bin, umbrella stand and central locking
- **NEW** rear garage with lighting, heating, sockets and hanging provision, with access doors on both sides
- Exterior access locker door in to bed box (664 & 674)
- Provision for 1 x 6kg and 1 x 13kg gas bottles with fitted butane/ propane regulator and propane hose
- Flush fitting, double glazed, tinted acrylic windows with night latch ventilation
- Reversing camera with 7" LCD screen rear view mirror
- Heavy duty chassis extensions ready for optional towbar
- Bike rack fixing rails fitted to the rear
- All models have a MTPLM of 3500kg and can be driven on a normal category B driving license (except 674 which has an MTPLM of 4500kg and cannot be driven on a normal category B driving license).

DRIVING

- **NEW** dashboard design including:
 - **NEW** 7" touchscreen HD colour display
 - **NEW** steering wheel with steering wheel controls
 - **NEW** 3.5" Instrument cluster and infotainment system
 - **NEW** cab light, back lighting & floor lights
 - **NEW** DAB radio with Apple Carplay™ /Android AutoTM, USB and Bluetooth
 - **NEW** central area with pocket for smartphone, double USB points and cup holders
 - **NEW** door pockets with bottle holder
 - Cruise control
 - Driver and passenger airbags
 - Cab air-conditioning
- ABS brakes
- EBD (electronic brake force distribution)
- Immobiliser with rolling code
- Variable power steering
- Electrically adjusted and heated wing mirrors fitted with direction indicators and DAB radio aerial
- Electrically operated and tinted cab windows
- Adjustable headlamp height
- Adjustable steering wheel position
- Pleated cab blinds (windscreen and side blinds)
- Removable and bleachable cab carpet
- Central dash mounted holder for full width tablet with USB point
- Driver and passenger captain chairs both with:
 - Position, height and rake adjustment
 - Swivel base
 - Two armrests
 - Integrated headrest
 - Fully upholstered covers
 - Seat base surrounds

LIVING, RELAXING & SLEEPING

- **NEW** Calipso soft furnishing scheme with complementary scatter cushions, which has been thoroughly tested across 30 different stains to ensure it is stain resistant and easy to clean
- Decorative Aralie Sen woodgrain detail with **NEW** complementary Toro Tela and Grau furniture
- **NEW** cream gloss, soft-close upper locker doors with feature inlays
- Fabric covered wall pads
- French Oak effect, high impact, scratch resistant floor lino
- Sectioned removable and bleachable carpets for flexibility
- Removable stepwell mat
- **NEW** entrance doorway feature panel with illuminated grab handle
- Front parallel lounge with **NEW** fold-down Aguti travelling seats incorporating ISOfix (2 x Aguti seats on offside on 674)
- Lap and diagonal seat belts on all designated passenger seats
- Ergonomically contoured bedding and sumptuous fabrics for increased comfort
- Seat backrest ventilation boards
- Lounge bench seat cushions and bed mattresses supported by beech slats for extra comfort
- Exclusive Duvalay Duvalite Apollo Luxe mattress containing Freshtec – a market leading high spec foam offering maximum airflow for a cool, comfortable good night's sleep (fixed beds and drop down beds)
- **NEW** rise and fall rear island bed to provide greater storage when travelling (694)
- **NEW** wider height adjustable electric drop-down bed over front lounge (640 & 674)
- Pleated cassette blinds with flyscreens on all windows
- Easy action concertina door flyscreen
- **NEW** increased head height (2110mm)

EATING

- **NEW** upgraded Thetford Triplex combination oven and grill, plus a 3 burner gas hob with **NEW** electric hotplate, all with electronic ignition. Hob features a glass lid with automatic gas shut-off functionality
- **NEW** Dometic built-in flatbed microwave with digital controls
- Dometic (Series 10) 133 litre, tall slimline, dual hinged, automatic energy selection fridge with 230V, gas and 12V operation incorporating 12 litre removable freezer compartment
- **NEW** Slate Weft laminate kitchen worktop with textured finish and durable stainless steel sink
- L-Shaped sink unit with foldaway kitchen worktop extension
- Vector chrome effect kitchen mixer tap
- **NEW** illuminated 'Beige Weft' laminate kitchen splashback
- Removable drainer and food grade nylon chopping board nestle together for easy storage in dedicated location
- **NEW** Mapa electric rise and fall table
- **NEW** pull-out occasional table in rear lounge (674 only)
- Kitchen rooflight with flyscreen and blind

WASHING

- **NEW** washroom design with a level floor, vanity unit, sink, toilet and separate shower
- Dedicated shower cubicle with shower mixer tap, riser bar, soap dish and integrated storage shelf for toiletries
- **NEW** quadrant shower lighting
- **NEW** Ecocamel Jetstorm shower head with on/off button for a powerful shower that uses less water
- **NEW** Crema Bianca marble effect wallboard and concrete effect sidewall GRP in shower with Tournai Stone floor vinyl on raised floor in vanity area
- **NEW** gloss white combined vanity bowl and top with upper and lower cupboard storage, mirror and vector chrome effect mixer tap
- Thetford cassette toilet with electric flush and 18 litre wheeled tank
- Micro-Heki skylight with flyscreen in washroom
- 32mm thick entrance door with domestic style mortice lock and handle (except 640, which has a tambour door)

STORAGE

- Positive locker catches throughout for secure storage on the move with chrome handles
- Lounge seat and bed tops spring assisted for easy storage access (except travelling seats)
- Pan storage drawers underneath oven & fridge

UTILITIES

- EC400 Control unit with simple controls for monitoring and managing:
 - Battery selection and battery level meter
 - Selected lighting control
 - Water system controls and tank levels
- Dual fuel Truma combi boiler for excellent heating efficiency
- Digital programmable controller for heating and hot water
- Truma 'Crash Sensor Mono' regulator for en-route use of heating and water heating
- Pressurised fresh water system with self-priming pump and accumulator
- 12V exterior power point for pump filling of water tank (pump not supplied)
- 90 litre underfloor mounted fresh water tank with level sensor
- 68 litre underfloor mounted waste water tank with level sensor
- Electronically operated drain valves on fresh and waste water tanks
- Winter Pack with waste water tank heater with en-route heating to keep defrosted, insulated drain valve covers and fridge vent covers
- Fully sealed, long life, 80 Amp-hour (Dir 2006/66/EC) leisure battery below driver's seat

- Mains 230V supply, via easy-access consumer unit, to sockets, fridge, heater, water heater and battery charger/transformer
- 25 metre mains hook-up cable
- 25 Amp/300 Watt charger/transformer for leisure batteries
- Ultra-low energy LED lighting system:
 - Downlights
 - Over-locker ambient lighting
 - Adjustable cab reading lights
 - Strip lighting in china locker
- A minimum of four 230V chrome sockets
- Dedicated USB points including **NEW** under locker USB points
- USB socket for rear passenger seats
- Status 570 TV aerial
- TV points with 230V and 12V sockets and aerial socket

SAFETY & SECURITY

- VIN CHIPTM identification system concealed within construction to deter theft and aid quick recovery
- Single key for all habitation doors
- Key fob operated remote central locking of cab doors and habitation door
- Smoke alarm
- Carbon monoxide alarm

CUSTOMER SERVICE

- 10 year manufacturer-backed bodyshell warranty

OPTIONS

Factory Fit

- Upgrade to 140bhp, 2.2 litre engine with 9-speed full automatic transmission
- Upgrade to 160bhp, 2.2 litre engine with 6-speed manual transmission
- Upgrade to 160bhp, 2.2 litre engine with 9-speed full automatic transmission
- Detachable homologated tow bar and electrics

Dealer Fit

- 3700kg MTPLM upgrade (except 674)
- Thule rail mounted rear cycle rack*

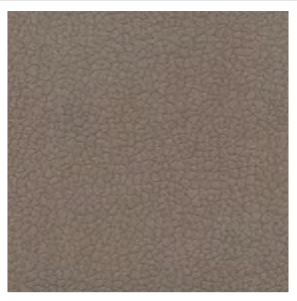
*Dependent on model, visibility through rear camera may be reduced when bicycles are carried on the optional bike carrier



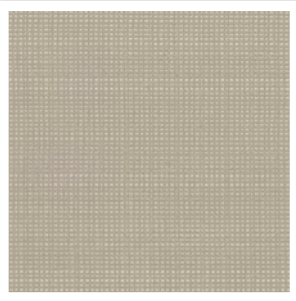
SOFT FURNISHING SCHEME

Within the Escape range the **Calypso** fabric scheme comes as standard

SEATING

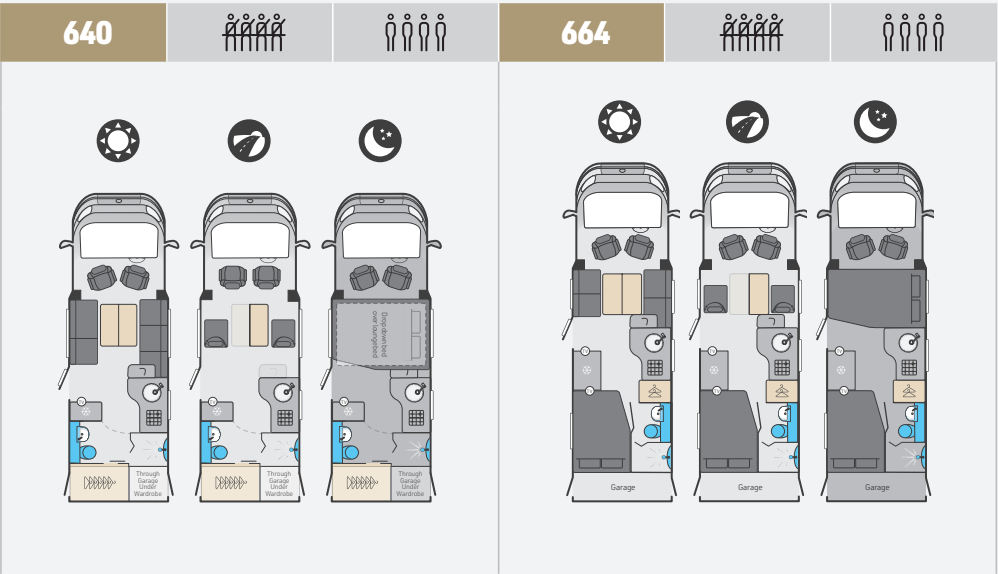


CUSHION

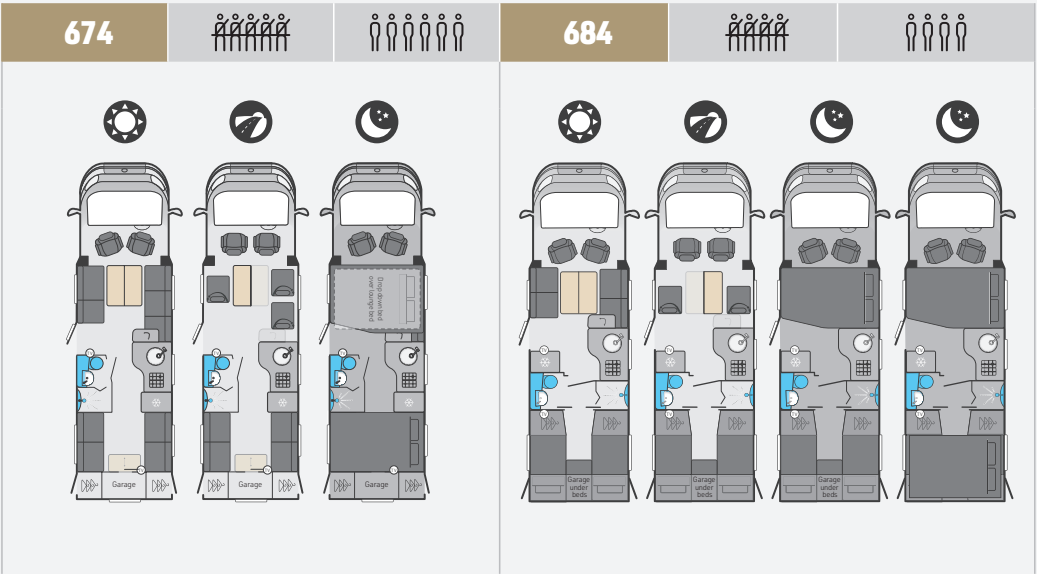


WALLBOARD

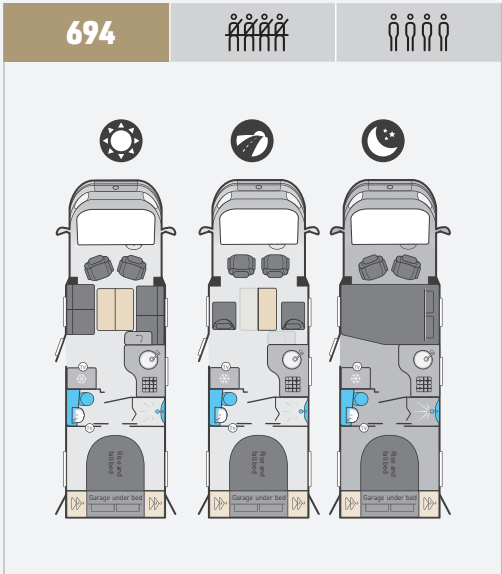




	Standard	Optional	Optional	Optional	Standard	Optional	Optional	Optional
Fiat MultiJet diesel engine	140	140 Auto	160	160 Auto	140	140 Auto	160	160 Auto
Engine capacity	2.2ltr				2.2ltr			
Engine power	140 Hp @ 3500 rpm		160hp @ 3500rpm		140 Hp @ 3500 rpm		160hp @ 3500rpm	
Engine torque	350 Nm @ 1400rpm	380 Nm @ 1400rpm	380 Nm @ 1500rpm	400 Nm @ 1500rpm	350 Nm @ 1400rpm	380 Nm @ 1400rpm	380 Nm @ 1500rpm	400 Nm @ 1500rpm
Wheel base	4.20m / 13'9"				4.30m / 14'1"			
Seat belts (inc. driver)	4				4			
Berths (sleeping positions)	4				4			
Overall length	6.99m / 22'11"				7.84m / 25'9"			
Overall body width (mirrors folded)	2.37m / 7'9"				2.37m / 7'9"			
Overall height	2.86m / 9'5"				2.88m / 9'5" Est			
Optional awning	Thule 4200 4.0m				Thule 4200 4.5m			
Maximum technical permissible laden mass (A)	3500kg				3500kg			
Mass in running order (B)	3061kg	3094kg	3076kg	3094kg	3111kg Est	3144kg Est	3126kg Est	3144kg Est
Maximum user payload (A-B)	439kg	406kg	424kg	406kg	389kg Est	356kg Est	374kg Est	356kg Est
Thermal insulation grade	THREE				THREE			
Recommended maximum trailer weight	2000kg				2000kg			
Gross train weight	5500kg				5500kg			
BED SIZES								
Front double	194cm x 165cm / 136cm / 6'4" x 5'10" / 4'6"				194cm x 133cm / 106cm / 6'4" x 4'4" / 3'6"			
Rear double					188cm x 129cm / 6'2" x 4'3"			
Rear nearside single								
Rear offside single								
Drop down bed	189cm x 150cm / 6'2" x 4'11"							



	Standard	Optional	Optional	Optional	Standard	Optional	Optional	Optional
Fiat MultiJet diesel engine	140	140 Auto	160	160 Auto	140	140 Auto	160	160 Auto
Engine capacity	2.2ltr				2.2ltr			
Engine power	140 Hp @ 3500 rpm		160hp @ 3500rpm		140 Hp @ 3500 rpm		160hp @ 3500rpm	
Engine torque	350 Nm @ 1400rpm	380 Nm @ 1400rpm	380 Nm @ 1500rpm	400 Nm @ 1500rpm	350 Nm @ 1400rpm	380 Nm @ 1400rpm	380 Nm @ 1500rpm	400 Nm @ 1500rpm
Wheel base	4.70m / 15'5"				4.70m / 15'5"			
Seat belts (inc. driver)	5				4			
Berths (sleeping positions)	6				4			
Overall length	8.22m / 27'0"				7.84m / 25'9"			
Overall body width (mirrors folded)	2.37m / 7'9"				2.37m / 7'9"			
Overall height	2.86m / 9'5"				2.88m / 9'5" Est			
Optional awning	Thule 4200 4.5m				Thule 4200 4.5m			
Maximum technical permissible laden mass (A)	4500kg				3500kg			
Mass in running order (B)	3251kg Est	3284kg Est	3266kg Est	3284kg Est	3131kg Est	3164kg Est	3146kg Est	3164kg Est
Maximum user payload (A-B)	1249kg Est	1216kg Est	1234kg Est	1216kg Est	369kg Est	336kg Est	354kg Est	336kg Est
Thermal insulation grade	THREE				THREE			
Recommended maximum trailer weight	2000kg				2000kg			
Gross train weight	6000kg#				5500kg			
BED SIZES								
Front double	194cm x 136cm / 6'4" x 4'6"				194cm x 133cm / 106cm / 6'4" x 4'4" / 3'6"			
Rear double	202cm x 132cm / 6'8" x 4'4"				206cm x 115cm / 6'9" x 3'9"			
Rear nearside single					195cm x 78cm / 6'5" x 2'7"			
Rear offside single					195cm x 78cm / 6'5" x 2'7"			
Overcab bed	189cm x 150cm / 6'2" x 4'11"							



	Standard	Optional	Optional	Optional
Fiat MultiJet diesel engine	140	140 Auto	160	160 Auto
Engine capacity	2.2ltr			
Engine power	140 Hp @ 3500 rpm		160hp @ 3500rpm	
Engine torque	350 Nm @ 1400rpm	380 Nm @ 1400rpm	380 Nm @ 1500rpm	400 Nm @ 1500rpm
Wheel base	4.70m / 15'5"			
Seat belts (inc. driver)	4			
Berths (sleeping positions)	4			
Overall length	7.84m / 25'9"			
Overall body width (mirrors folded)	2.37m / 7'9"			
Overall height	2.88m / 9'5"			
Optional awning	Thule 4200 4.5m			
Maximum technical permissible laden mass (A)	3500kg			
Mass in running order (B)	3131kg Est	3164kg Est	3146kg Est	3164kg Est
Maximum user payload (A-B)	369kg Est	336kg Est	354kg Est	336kg Est
Thermal insulation grade	THREE			
Recommended maximum trailer weight	2000kg			
Gross train weight	5500kg			
BED SIZES				
Front double	194cm x 133cm / 106cm / 6'4" x 4'4" / 3'6"			
Rear double	180cm x 143cm / 5'11" x 4'8"			
Rear nearside single				
Rear offside single				
Rear bunk (upper)				
Rear bunk (lower)				
Overcab bed				

GENERAL TECHNICAL NOTES

1. The Maximum User Payload includes:

a) The conventional load (this is the allowance for passengers)

b) Essential habitation equipment (items and fluids required for safe and proper functioning of habitation equipment)

c) Optional equipment (items available from the manufacturer over and above the standard specification)

d) Personal effects (those items not covered by the above)

2. The Mass in Running Order is the mass of the unladen vehicle including a 75kg allowance for the driver plus engine coolants and 90% of the fuel tank capacity and 1 x 6kg Calor Lite LPG cylinder. The MRO is calculated with the fresh water tank empty. If you travel with water in the fresh water tank then the payload will reduce accordingly.

3. Please take care to ensure that you have allowed for the masses of all items you intend to carry in the motorhome, e.g. passengers, optional equipment, essential habitation equipment and personal effects, such as clothing, food, pets, bicycles, sailboards, sports equipment etc.
4. Warning - under no circumstances should the maximum technical permissible laden mass of this motorhome be exceeded.
- # The maximum trailer weight is limited by the gross train weight which must not be exceeded. For example if the vehicle is at the maximum MTPLM of 4500kg, then the maximum trailer weight possible is 1500kg. Reducing the weight of the vehicle by removing payload, will allow you to increase the trailer weight up to a maximum of 2000kg.

Est = Estimate





SWIFT
CREATING SMILES FOR LIFE

VIEW & DOWNLOAD
YOUR COMPLETE RANGE
OF SWIFT BROCHURES HERE
swiftgroup.co.uk/downloads

OR SCAN THE QR CODE



SCAN FOR MORE

swiftgroup.co.uk

DISCLAIMER

This brochure does not constitute an offer by Swift Group Limited (Swift). Swift reserves the right to alter specifications and prices at any time as materials and conditions demand. Distributors and dealers sell Swift products on their own account and not as agents of Swift. Accordingly, they have no authority to bind Swift or to make any representation or undertaking whatsoever on behalf of Swift. All props are for photographic purposes only and are not included in the specification. Models shown may be fitted with optional extras. Issued September 2021.

CARAVANS • MOTORHOMES • HOLIDAY HOMES - MADE IN BRITAIN BY SWIFT

